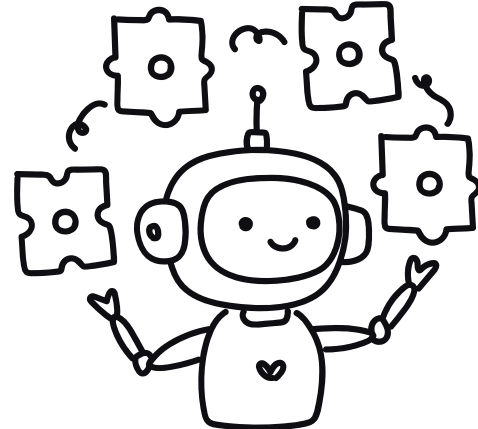


OUR CURRICULUM



5 Year Progressive Chart for STEM-Tech Education
(JL = Junior Level & SL = Senior Level)

Class	Year 1 (2025)	Year 2 (2026)	Year 3 (2027)	Year 4 (2028)	Year 5 (2029)
2	JL1	JL1	JL1	JL1	JL1
3	JL1	JL2	JL2	JL2	JL2
4	JL2	JL2	JL3	JL3	JL3
5	JL2	JL3	JL3	JL4	JL4
6	SL1	SL1	SL1	SL1	SL1
7	SL1	SL2	SL2	SL2	SL2
8	SL2	SL2	SL3	SL3	SL3
9	SL2	SL3	SL3	SL4	SL4
10	SL2	SL3	SL4	SL4	Graduated*

How to Read These Charts

1. Row = Current Class for that year.
2. Column = Curriculum Level being studied that year.
3. Each year, Class N from the previous year becomes class (N+1), and Level L becomes Level (L+1) (JL1 → JL2 → JL3 → JL4 → SL1 → SL2 → SL3 → SL4).
4. A new Class 2 starts at JL1 every year.

This progression ensures:

1. Students progress naturally through levels as they advance through grades
2. No student skips levels or misses crucial content
3. The transition to new levels (JL3, JL4, SL3, SL4) happens gradually
4. Each student completes their education with the full sequence of levels
5. The implementation maintains educational continuity while introducing new advanced content